

# THE EU SUGAR INDUSTRY AT A GLANCE

Supporting labour markets, generating economic value in rural areas



# 107



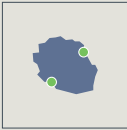
factories in 19 Member States

+

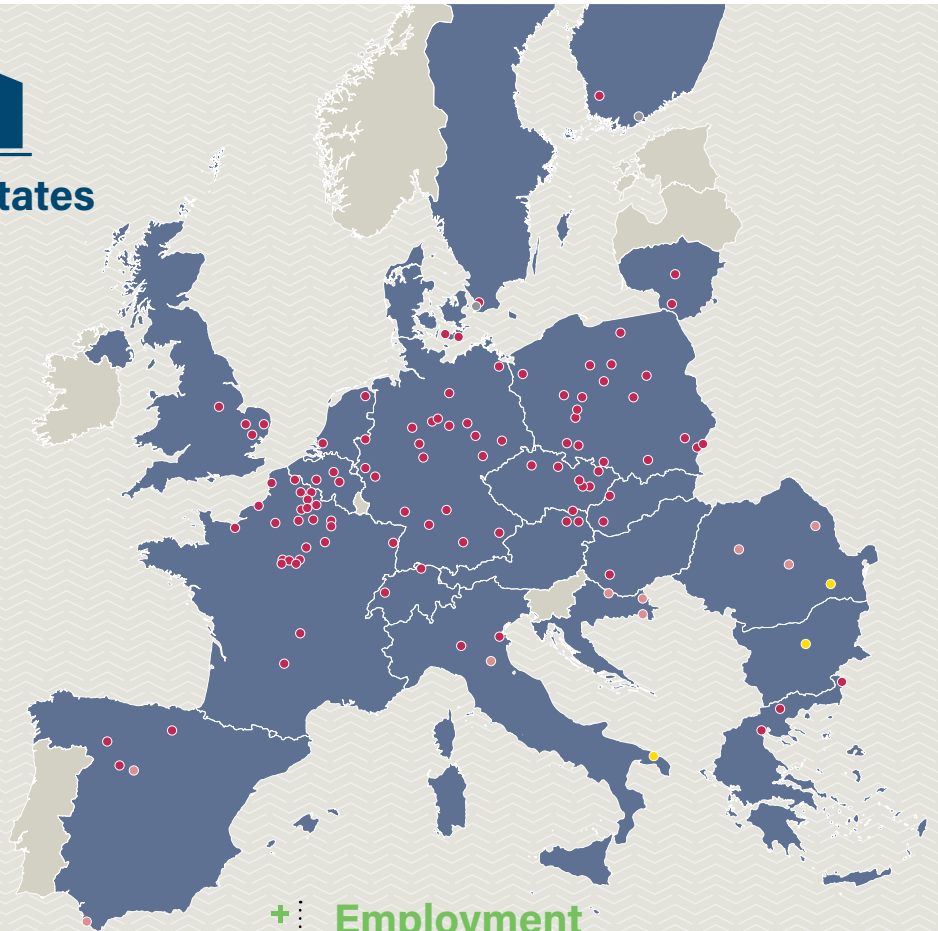
La Réunion

Guadeloupe

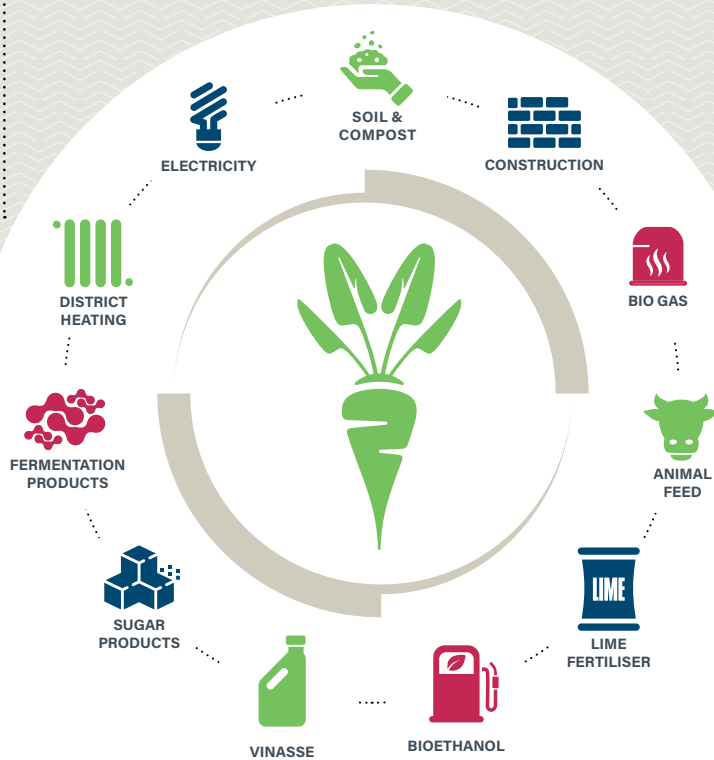
Martinique



- Beet sugar factory
- Beet sugar factory & cane sugar refinery
- Cane & beet sugar refinery
- Cane sugar refinery
- Cane sugar factory



## + Beet-Derived Products: NO Waste



## + Employment

23.700 sugar factory jobs



+

Supporting 338.500 additional jobs along the supply chain



Total jobs generated by the sugar industry = **362.200**



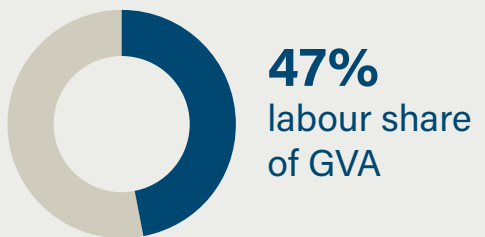
**14 JOBS SUPPORTED FOR EVERY DIRECT JOB IN A SUGAR FACTORY**

# + HIGHLY PRODUCTIVE INDUSTRY



  
Jobs are industrial and highly-skilled


 **154,000 EUR PER EMPLOYEE**  
(vs 57,000 EUR in the wider food & beverages industry)  
Due to high efficiency and capital intensity



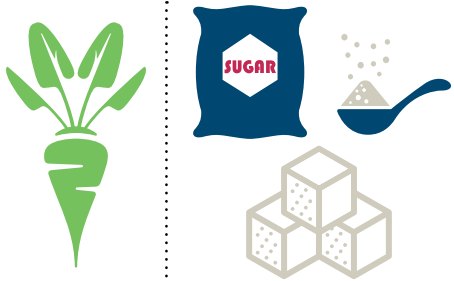
  
**1.3 BILLION EUROS**  
directly contributed to EU tax and welfare systems





 **3.6 billion EUR**  
**GDP**  
**Direct** GDP contribution of 3.6 billion EUR

 **80%**  
Around 80% of value created in rural areas

**Total: 15.6 billion EUR**  
GDP contribution  
(incl. indirect & induced)



 +32 2 762 07 60  
 Avenue de Tervuren 182  
B-1150, Brussels, Belgium

 [www.cefs.org](http://www.cefs.org)  
 @SugarEurope

2017 data EU-27. Number of factories: EU-28  
GDP stands for Gross Domestic Product  
GVA stands for Gross Value Added  
July 2019

